



LIVESTOCK PRODUCTS AUSTRALIA

EMBARGO: 11:30AM (CANBERRA TIME) THURS 9 AUG 2001

JUNE QTR KEY FIGURES

TREND ESTIMATES	Jun Qtr 2000 '000	Mar Qtr 2001 '000	Jun Qtr 2001 '000
Number slaughtered			
Cattle	1 884.1	1 914.6	1 910.5
Calves	279.3	254.1	255.4
Sheep	4 129.6	4 135.6	4 110.1
Lambs	4 651.2	4 763.9	4 786.9
Pigs	1 253.5	1 260.3	1 273.2
Chickens	100 296.6	99 012.3	97 884.3

	Jun Qtr 2000 tonnes	Mar Qtr 2001 tonnes	Jun Qtr 2001 tonnes
Meat produced			
Beef	494 353	504 763	505 003
Veal	8 842	8 239	7 959
Mutton	87 439	85 788	84 145
Lamb	92 984	93 370	93 625
Pig meat	91 095	91 916	92 716
Chicken meat	152 504	154 322	154 030
Wool receivals	166 526	150 553	156 930

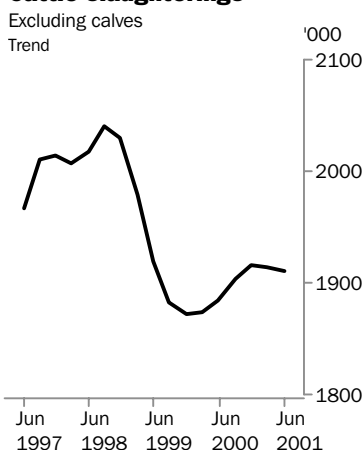
	Mar Qtr 2000 ML	Dec Qtr 2000 ML	Mar Qtr 2001 ML
Whole milk intake by factories	2 746	2 611	2 504

JUNE QTR KEY POINTS

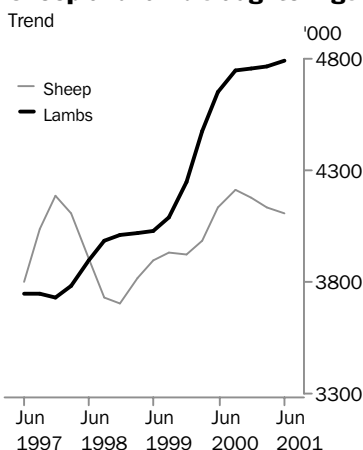
TREND ESTIMATES

- The trend estimate for the number of cattle slaughtered in June quarter 2001 was 1.9 million. Cattle slaughter numbers have remained steady at around this level since June quarter 1999.
- The trend estimate for the number of lambs slaughtered increased slightly over the previous quarter to 4.8 million. This was the fourteenth consecutive quarterly increase in the number of lambs slaughtered and the highest quarterly figure since December quarter 1985.
- The trend estimate for veal production fell by 3% to 7,960 tonnes in June quarter 2001. This was the sixth consecutive quarterly decrease and the lowest quarterly figure since March quarter 1989.

Cattle slaughtering



Sheep and lamb slaughtering



▪ For further information about these and related statistics, contact Debbie Thomas on Hobart 03 6222 5948, or the National Information and Referral Service on 1300 135 070.

NOTES

FORTHCOMING ISSUES

ISSUE (Quarter)

RELEASE DATE

September 2001

13 November 2001

December 2001

11 February 2002



CHANGES IN THIS ISSUE

There are no changes in this issue.

FORTHCOMING CHANGES

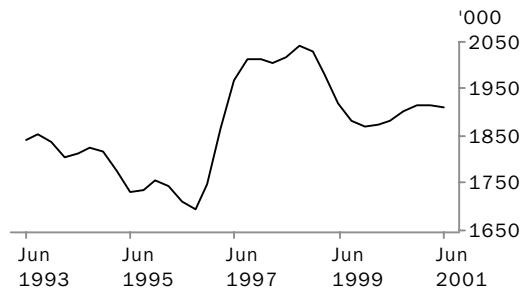
There are no forthcoming changes.



Dennis Trewin
Australian Statistician

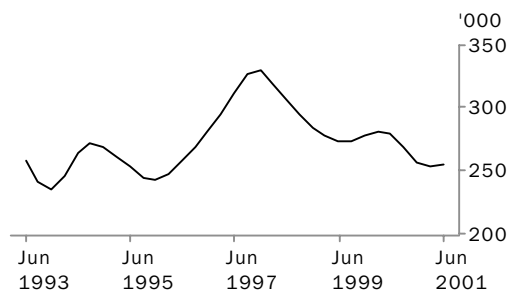
LIVESTOCK SLAUGHTERED: Trend

CATTLE (EXCLUDING CALVES)



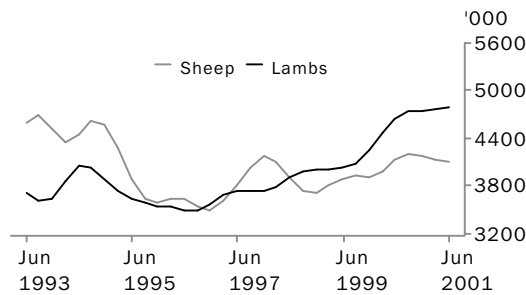
The trend estimate for the number of cattle slaughtered in June quarter 2001 was 1.9 million. Cattle slaughter numbers have remained steady at around this level since June quarter 1999.

CALVES



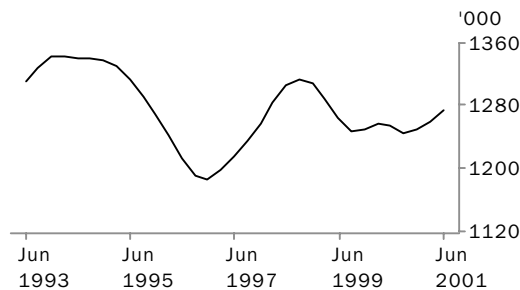
The trend estimate for the number of calves slaughtered in June quarter 2001 was 255,000, up 1% on the March quarter 2001 estimate.

SHEEP AND LAMBS



The trend estimate for the number of sheep slaughtered in June quarter 2001 fell by 1% to 4.1 million. The trend estimate for the number of lambs slaughtered increased slightly over the previous quarter to 4.8 million. This was the fourteenth consecutive quarterly increase and the highest quarterly figure since December quarter 1985.

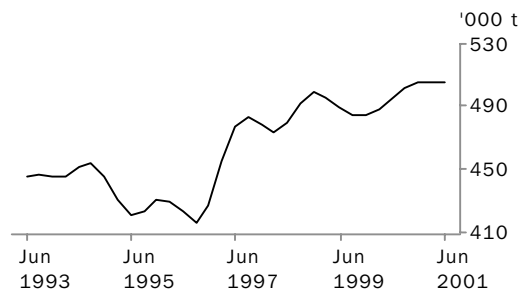
PIGS



The trend estimate for the number of pigs slaughtered in June quarter 2001 increased by 1% to 1.3 million, the highest quarterly figure since March quarter 1999.

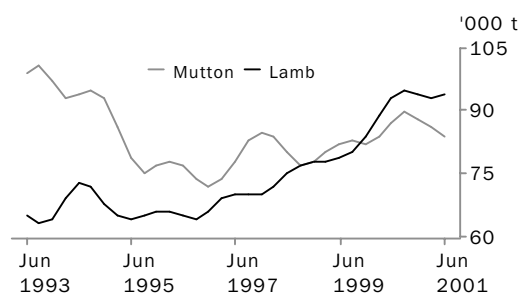
MEAT PRODUCTION: Trend

BEEF



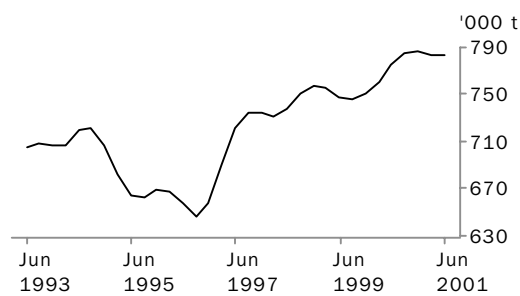
The trend estimate for beef production in June quarter 2001 remained steady at 505,000 tonnes with export demands remaining strong.

MUTTON AND LAMB



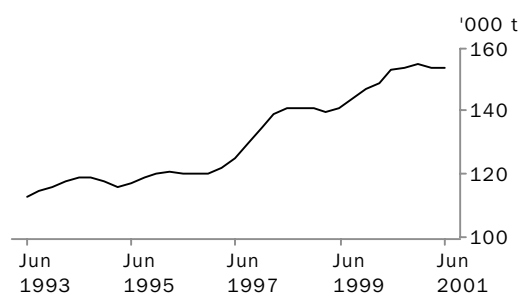
June quarter estimates show a continued preference for lamb over mutton. The trend estimate for mutton production fell by 2% in June quarter 2001 to 84,100 tonnes, while the trend estimate for lamb production remained steady at 93,600 tonnes.

TOTAL RED MEAT



The trend estimate for total red meat production remained steady at 783,000 tonnes in June quarter 2001. Small increases in beef, lamb and pig meat production were offset by decreases in veal and mutton.

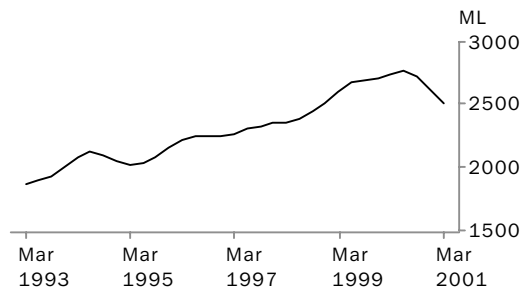
CHICKEN MEAT



The trend estimate for chicken meat production in June quarter 2001 remained steady at 154,000 tonnes, just below the record high of 155,000 tonnes in December quarter 2000.

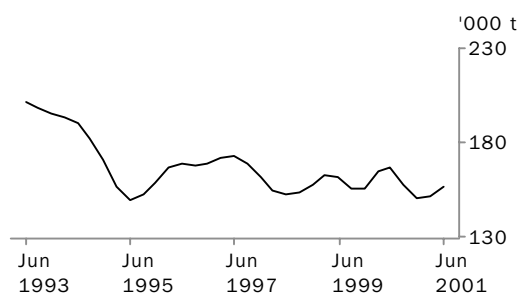
LIVESTOCK PRODUCTS: Trend

WHOLE MILK INTAKE BY FACTORIES



The trend estimate for whole milk intake by factories fell by 4% to 2.5 billion litres in March quarter 2001 and reflects hot and dry conditions in most States.

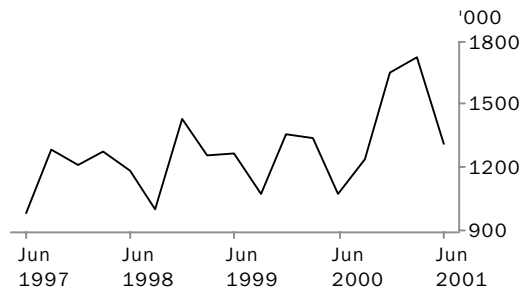
BROKERS AND DEALERS RECEIVALS OF TAXABLE WOOL



The trend estimate for wool receivals by brokers and dealers increased by 4% to 157,000 tonnes. This was the second consecutive quarterly increase after reaching a five year low in December quarter 2000.

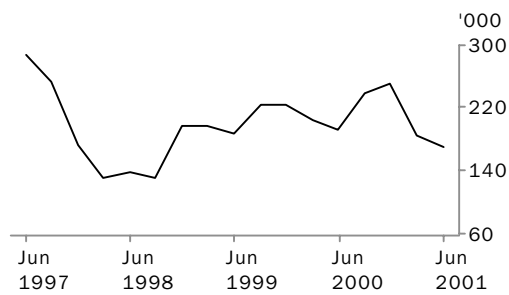
LIVESTOCK EXPORTS: Original

EXPORTS OF LIVE SHEEP



Live sheep exports in June quarter 2001 fell by 24% to 1.3 million after reaching a 12 year high of 1.7 million in the previous quarter. However continued demand from competing markets and a weakened \$A saw the unit price rise by 10% to \$49.58.

EXPORTS OF LIVE CATTLE



Live cattle exports fell by 7% in June quarter 2001 to 171,000 and reflect difficulties in some Asian markets. The unit value fell slightly to \$617.22, and with reduced numbers, saw the gross value of live cattle exports drop by 9% to \$106 million.

LIVESTOCK SLAUGHTERED, Australia(a): All Series

Quarter	Bulls, bullocks and steers '000	Cows and heifers '000	Total cattle (excluding calves) '000	Calves '000	Sheep '000	Lambs '000	Pigs '000	Chickens '000
ORIGINAL								
2000								
March	920.3	885.9	1 806.3	132.8	4 543.1	4 255.9	1 229.4	98 678.2
June	947.4	1 001.0	1 948.3	255.9	3 657.8	4 725.9	1 307.5	98 804.8
September	1 010.6	930.9	1 941.5	522.9	3 863.2	4 736.0	1 238.0	100 165.6
December	1 009.5	872.1	1 881.6	168.0	4 392.6	4 860.1	1 239.6	102 526.8
2001								
March	951.8	890.0	1 841.9	119.7	4 654.4	4 729.0	1 217.9	98 877.8
June	1 011.4	980.6	1 992.1	226.9	3 826.0	4 620.7	1 317.3	96 644.3
SEASONALLY ADJUSTED								
2000								
March	942.0	918.4	1 860.4	292.6	3 992.1	4 406.7	1 269.1	98 104.2
June	957.9	915.8	1 873.7	285.9	4 029.3	4 831.2	1 261.1	100 196.8
September	993.2	924.5	1 917.7	266.7	4 472.1	4 695.6	1 226.3	102 078.4
December	994.0	932.5	1 926.4	243.1	4 031.9	4 645.0	1 255.9	99 741.3
2001								
March	973.9	922.1	1 896.0	263.6	4 088.0	4 895.4	1 262.1	98 837.8
June	1 023.8	897.3	1 921.1	254.2	4 217.4	4 725.1	1 270.3	98 016.7
TREND ESTIMATES								
2000								
March	967.0	906.6	1 873.6	281.2	3 983.2	4 475.0	1 256.9	98 799.2
June	965.2	918.8	1 884.1	279.3	4 129.6	4 651.2	1 253.5	100 296.6
September	976.7	927.5	1 904.2	268.2	4 216.2	4 744.8	1 246.0	100 924.4
December	989.0	926.1	1 915.1	256.4	4 179.7	4 752.3	1 249.1	100 233.5
2001								
March	996.0	918.6	1 914.6	254.1	4 135.6	4 763.9	1 260.3	99 012.3
June	1 004.1	906.4	1 910.5	255.4	4 110.1	4 786.9	1 273.2	97 884.3

(a) For more information refer to paragraphs 5 to 9 of the Explanatory Notes.

LIVESTOCK PRODUCTS, Australia(a): All Series

RED MEAT.....

Quarter	Beef	Veal	Mutton	Lamb	Pig meat	Total red meat	Chicken meat	Whole milk intake by factories	Brokers and dealers receipts of taxable wool
	tonnes	tonnes	tonnes	tonnes	tonnes	tonnes	tonnes	ML	tonnes
ORIGINAL									
2000									
March	472 298	6 397	94 135	84 882	88 130	745 843	150 476	2 682	137 150
June	505 010	8 610	75 062	95 435	95 985	780 103	149 492	1 883	137 892
September	510 074	13 429	83 423	94 268	90 708	791 903	152 454	2 600	169 850
December	502 390	6 545	94 781	94 727	89 541	787 985	160 945	3 604	174 391
2001									
March	485 963	5 743	94 659	93 309	87 319	766 994	150 124	2 436	138 105
June	522 481	7 755	77 113	90 868	97 315	795 532	154 777	n.a.	113 967
SEASONALLY ADJUSTED									
2000									
March	482 804	9 176	83 242	87 452	93 717	756 391	150 005	2 740	158 100
June	492 847	8 725	84 748	97 037	90 782	774 139	151 068	2 810	190 025
September	505 505	8 630	96 210	93 966	89 086	793 397	154 868	2 773	147 862
December	508 676	8 600	84 971	90 977	90 996	784 220	157 681	2 555	138 620
2001									
March	496 683	8 239	83 674	96 121	92 825	777 542	149 965	2 499	161 051
June	510 096	7 857	87 141	92 414	92 009	789 517	156 428	n.a.	155 309
TREND									
2000									
March	487 907	8 939	83 763	88 900	91 421	760 930	149 473	2 746	165 029
June	494 353	8 842	87 439	92 984	91 095	774 713	152 504	2 778	166 526
September	501 588	8 694	89 504	94 565	90 427	784 778	154 376	2 722	158 374
December	504 642	8 481	87 980	93 806	90 828	785 737	154 660	2 611	150 163
2001									
March	504 763	8 239	85 788	93 370	91 916	784 076	154 322	2 504	150 553
June	505 003	7 959	84 145	93 625	92 716	783 448	154 030	n.a.	156 930

(a) For more information refer to paragraphs 5 to 9 and 13 to 15 of the Explanatory Notes.

NUMBER OF LIVESTOCK SLAUGHTERED(a), Bulls, Bullocks and Steers: All Series

	<i>New South Wales</i>	<i>Victoria</i>	<i>Queensland</i>	<i>South Australia</i>	<i>Western Australia</i>	<i>Tasmania</i>	<i>Australia</i>
<i>Quarter</i>	'000	'000	'000	'000	'000	'000	'000
ORIGINAL							
2000							
March	192.2	192.9	416.1	46.7	42.3	29.9	920.3
June	179.3	154.5	503.3	41.3	41.2	26.4	947.4
September	179.5	145.6	578.8	38.5	45.8	18.9	1 010.6
December	168.6	164.0	545.1	49.8	59.3	22.4	1 009.5
2001							
March	183.6	167.6	481.3	50.4	39.8	28.9	951.8
June	180.3	141.5	586.1	41.0	42.1	20.1	1 011.4
SEASONALLY ADJUSTED							
2000							
March	187.1	172.6	472.4	44.3	44.1	26.7	942.0
June	185.0	162.1	493.1	44.6	46.2	25.5	957.9
September	180.6	158.0	517.3	46.3	51.0	21.8	993.2
December	167.2	157.3	557.7	41.9	47.5	22.8	994.0
2001							
March	178.6	152.0	545.7	47.9	41.7	25.8	973.9
June	186.4	148.6	575.5	44.2	47.2	19.4	1 023.8
TREND ESTIMATES							
2000							
March	190.3	172.5	490.0	43.3	45.1	26.4	967.0
June	184.1	163.6	496.9	44.2	47.2	24.3	965.2
September	177.0	158.5	517.8	45.1	48.2	23.6	976.7
December	174.9	155.5	542.6	44.9	47.0	23.3	989.0
2001							
March	177.3	152.5	558.4	45.1	45.3	22.9	996.0
June	182.5	149.5	569.2	45.3	44.4	22.0	1 004.1

(a) For more information refer to paragraph 4 of the Explanatory Notes.

NUMBER OF LIVESTOCK SLAUGHTERED(a), Cows and Heifers: All Series

	<i>New South Wales</i>	<i>Victoria</i>	<i>Queensland</i>	<i>South Australia</i>	<i>Western Australia</i>	<i>Tasmania</i>	<i>Australia</i>
<i>Quarter</i>	'000	'000	'000	'000	'000	'000	'000
ORIGINAL							
2000							
March	242.7	208.1	313.3	38.6	52.8	29.3	885.9
June	248.0	224.4	398.1	41.0	49.4	32.9	1 001.0
September	236.2	205.1	379.9	32.3	54.7	14.7	930.9
December	234.3	221.9	300.4	32.7	59.3	22.4	872.1
2001							
March	247.6	234.2	283.1	37.5	58.8	27.7	890.0
June	266.6	212.9	380.6	34.5	55.6	29.4	980.6
SEASONALLY ADJUSTED							
2000							
March	238.3	202.3	351.5	37.7	48.8	27.0	918.4
June	232.8	220.0	341.6	38.4	55.7	26.8	915.8
September	240.5	222.9	346.0	34.0	58.1	19.8	924.5
December	249.3	215.0	355.0	34.1	54.4	23.8	932.5
2001							
March	243.3	227.7	317.7	36.6	54.5	25.5	922.1
June	250.4	208.8	326.4	32.2	62.3	23.9	897.3
TREND ESTIMATES							
2000							
March	236.6	205.8	342.8	36.4	51.6	26.8	906.6
June	236.0	214.7	349.0	36.4	54.0	24.6	918.8
September	240.4	221.3	347.5	35.9	55.7	23.1	927.5
December	244.5	221.4	341.1	34.8	56.0	23.2	926.1
2001							
March	247.4	218.7	331.8	34.4	56.9	24.1	918.6
June	248.8	215.3	322.0	34.0	58.9	25.2	906.4

(a) For more information refer to paragraph 4 of the Explanatory Notes.

NUMBER OF LIVESTOCK SLAUGHTERED(a), Total Cattle (excluding Calves): All Series

	<i>New South Wales</i>	<i>Victoria</i>	<i>Queensland</i>	<i>South Australia</i>	<i>Western Australia</i>	<i>Tasmania</i>	<i>Australia</i>
<i>Quarter</i>	'000	'000	'000	'000	'000	'000	'000
ORIGINAL							
2000							
March	434.9	400.9	729.5	85.3	95.1	59.2	1 806.3
June	427.3	378.9	901.4	82.3	90.6	59.4	1 948.3
September	415.7	350.7	958.6	70.8	100.5	33.6	1 941.5
December	403.0	385.9	845.5	82.6	118.6	44.7	1 881.6
2001							
March	431.2	401.8	764.4	87.9	98.6	56.6	1 841.9
June	446.9	354.4	966.7	75.5	97.7	49.5	1 992.1
SEASONALLY ADJUSTED							
2000							
March	425.4	374.9	823.9	82.0	92.9	53.7	1 860.4
June	417.8	382.0	834.7	82.9	101.9	52.3	1 873.7
September	421.2	380.9	863.3	80.3	109.0	41.6	1 917.7
December	416.5	372.3	912.7	76.0	101.9	46.6	1 926.4
2001							
March	421.9	379.7	863.3	84.5	96.2	51.3	1 896.0
June	436.8	357.4	901.9	76.4	109.5	43.3	1 921.1
TREND ESTIMATES							
2000							
March	426.8	378.3	832.8	79.7	96.7	53.3	1 873.6
June	420.0	378.3	845.9	80.7	101.2	49.0	1 884.1
September	417.4	379.8	865.3	81.0	103.9	46.7	1 904.2
December	419.5	377.0	883.7	79.7	103.0	46.4	1 915.1
2001							
March	424.7	371.2	890.2	79.5	102.2	47.0	1 914.6
June	431.3	364.9	891.1	79.2	103.3	47.2	1 910.5

(a) For more information refer to paragraph 4 of the Explanatory Notes.

NUMBER OF LIVESTOCK SLAUGHTERED(a), Calves: All Series

	<i>New South Wales</i>	<i>Victoria</i>	<i>Queensland</i>	<i>South Australia</i>	<i>Western Australia</i>	<i>Tasmania</i>	<i>Australia</i>
<i>Quarter</i>	'000	'000	'000	'000	'000	'000	'000
ORIGINAL							
2000							
March	56.2	32.2	36.6	3.6	2.9	1.2	132.8
June	55.2	150.5	39.1	4.6	2.4	4.0	255.9
September	54.5	384.4	38.5	4.4	1.6	39.4	522.9
December	51.3	71.4	35.0	2.0	1.4	6.7	168.0
2001							
March	60.1	25.1	29.6	2.6	1.2	0.8	119.7
June	60.1	127.9	32.0	2.5	1.4	2.8	226.9
SEASONALLY ADJUSTED							
2000							
March	56.6	189.2	37.5	4.3	2.9	21.7	292.6
June	50.7	175.5	37.2	3.7	2.6	14.2	285.9
September	53.4	158.9	37.4	3.6	1.5	12.9	266.7
December	56.9	129.1	37.0	2.8	1.3	10.7	243.1
2001							
March	60.7	147.0	30.4	3.2	1.2	14.9	263.6
June	55.1	149.9	30.4	2.0	1.5	10.1	254.2
TREND ESTIMATES							
2000							
March	53.5	173.9	36.6	4.3	2.8	17.4	281.2
June	53.2	171.9	37.9	3.8	2.4	15.7	279.3
September	54.1	157.5	37.4	3.5	1.8	13.4	268.2
December	56.5	143.5	35.2	3.1	1.4	12.2	256.4
2001							
March	58.0	141.9	32.5	2.8	1.3	12.2	254.1
June	57.9	145.8	29.7	2.3	1.4	11.8	255.4

(a) For more information refer to paragraph 4 of the Explanatory Notes.

NUMBER OF LIVESTOCK SLAUGHTERED(a), Sheep: All Series

	<i>New South Wales</i>	<i>Victoria</i>	<i>Queensland</i>	<i>South Australia</i>	<i>Western Australia</i>	<i>Tasmania</i>	<i>Australia</i>
<i>Quarter</i>	'000	'000	'000	'000	'000	'000	'000
ORIGINAL							
2000							
March	1 416.5	1 132.4	357.5	377.4	1 059.3	200.0	4 543.1
June	1 311.8	903.6	318.5	247.3	723.9	152.8	3 657.8
September	1 374.5	865.5	381.1	314.7	867.7	59.6	3 863.2
December	1 389.7	999.9	355.3	377.3	1 190.3	80.1	4 392.6
2001							
March	1 626.5	1 207.4	367.3	419.6	890.0	143.7	4 654.4
June	1 466.8	1 017.0	384.7	376.6	499.2	81.7	3 826.0
SEASONALLY ADJUSTED							
2000							
March	1 309.0	954.2	338.3	300.2	950.0	146.9	3 992.1
June	1 372.6	1 049.6	348.1	294.3	794.7	154.1	4 029.3
September	1 495.4	1 065.2	371.7	435.8	1 007.1	104.0	4 472.1
December	1 333.8	876.8	354.1	319.7	1 073.0	74.9	4 031.9
2001							
March	1 503.0	1 017.9	347.6	333.6	795.8	105.1	4 088.0
June	1 536.8	1 178.9	421.1	447.9	548.0	82.8	4 217.4
TREND ESTIMATES							
2000							
March	1 333.6	976.9	341.6	300.9	877.0	151.5	3 983.2
June	1 371.0	1 014.3	347.8	335.2	923.2	135.0	4 129.6
September	1 411.4	999.9	355.9	353.2	984.0	111.8	4 216.2
December	1 433.7	983.7	359.2	358.9	955.4	93.7	4 179.7
2001							
March	1 468.7	1 023.5	371.9	370.3	820.6	87.4	4 135.6
June	1 513.1	1 104.7	392.4	391.6	624.0	88.7	4 110.1

(a) For more information refer to paragraph 4 of the Explanatory Notes.

NUMBER OF LIVESTOCK SLAUGHTERED(a), Lambs: All Series

	<i>New South Wales</i>	<i>Victoria</i>	<i>Queensland</i>	<i>South Australia</i>	<i>Western Australia</i>	<i>Tasmania</i>	<i>Australia</i>
<i>Quarter</i>	'000	'000	'000	'000	'000	'000	'000
ORIGINAL							
2000							
March	922.2	1 748.9	239.6	657.0	548.4	139.8	4 255.9
June	1 104.0	1 825.6	245.5	832.7	604.3	113.9	4 725.9
September	1 159.0	1 949.0	273.5	737.7	503.6	113.2	4 736.0
December	989.4	2 133.2	234.9	727.7	670.9	104.0	4 860.1
2001							
March	1 010.3	2 002.7	249.9	680.8	682.3	103.1	4 729.0
June	1 044.5	1 880.8	263.5	728.9	607.2	95.9	4 620.7
SEASONALLY ADJUSTED							
2000							
March	983.4	1 787.9	241.0	669.2	623.2	120.4	4 406.7
June	1 107.2	1 934.5	252.4	779.0	621.5	103.8	4 831.2
September	1 098.0	1 955.9	250.6	790.5	490.6	136.9	4 695.6
December	977.7	1 972.9	249.3	717.3	599.6	113.7	4 645.0
2001							
March	1 080.0	2 046.0	251.2	693.0	773.6	88.7	4 895.4
June	1 046.2	1 993.7	271.0	681.4	625.9	87.4	4 725.1
TREND ESTIMATES							
2000							
March	1 024.9	1 816.3	238.6	678.4	602.2	114.5	4 475.0
June	1 061.2	1 893.1	249.0	749.0	575.2	119.2	4 651.2
September	1 067.8	1 962.0	251.0	772.4	572.8	121.0	4 744.8
December	1 049.7	1 993.8	251.2	737.2	615.9	112.1	4 752.3
2001							
March	1 040.1	2 009.5	256.2	698.8	670.1	98.0	4 763.9
June	1 048.4	2 017.4	263.6	675.0	698.7	84.9	4 786.9

(a) For more information refer to paragraph 4 of the Explanatory Notes.

NUMBER OF LIVESTOCK SLAUGHTERED(a), Pigs: All Series

	New South Wales	Victoria	Queensland	South Australia	Western Australia	Tasmania	Australia
Quarter	'000	'000	'000	'000	'000	'000	'000
ORIGINAL							
2000							
March	349.7	358.7	276.5	120.3	105.8	16.4	1 229.4
June	386.7	344.0	294.0	127.7	136.4	17.3	1 307.5
September	429.2	277.3	268.0	118.4	128.7	14.6	1 238.0
December	416.7	261.5	295.4	119.9	131.0	13.5	1 239.6
2001							
March	429.6	258.8	239.9	139.9	134.4	13.7	1 217.9
June	464.1	268.1	271.6	147.6	148.5	15.8	1 317.3
SEASONALLY ADJUSTED							
2000							
March	365.2	382.3	281.2	120.3	106.7	17.8	1 269.1
June	380.7	329.5	284.3	121.1	129.8	16.3	1 261.1
September	424.0	273.3	268.2	117.8	125.6	14.5	1 226.3
December	411.5	262.5	297.8	126.0	139.2	13.3	1 255.9
2001							
March	448.3	276.5	246.7	143.2	135.5	14.9	1 262.1
June	457.0	256.6	262.5	139.8	141.3	14.9	1 270.3
TREND ESTIMATES							
2000							
March	361.0	361.5	278.1	118.1	121.3	16.9	1 256.9
June	386.9	327.9	282.1	119.2	121.5	15.9	1 253.5
September	409.0	288.8	281.0	121.7	128.9	14.8	1 246.0
December	425.8	268.9	274.6	128.5	135.0	14.1	1 249.1
2001							
March	441.7	264.1	265.8	136.6	137.9	14.3	1 260.3
June	454.8	262.8	257.7	143.5	141.4	14.8	1 273.2

(a) For more information refer to paragraph 4 of the Explanatory Notes.

NUMBER OF CHICKENS SLAUGHTERED(a): All Series

	<i>New South Wales</i>	<i>Victoria</i>	<i>Queensland</i>	<i>South Australia</i>	<i>Western Australia</i>	<i>Australia</i>
<i>Quarter</i>	'000	'000	'000	'000	'000	'000
ORIGINAL						
2000						
March	35 561.0	26 500.3	17 174.4	n.p.	n.p.	98 678.2
June	36 470.6	26 200.7	17 105.5	n.p.	n.p.	98 804.8
September	37 486.4	26 285.8	16 913.0	n.p.	n.p.	100 165.6
December	38 109.2	26 591.2	17 907.1	n.p.	n.p.	102 526.8
2001						
March	37 934.3	25 761.2	16 975.5	n.p.	n.p.	98 877.8
June	36 934.7	24 175.0	16 159.7	n.p.	n.p.	96 644.3
SEASONALLY ADJUSTED						
2000						
March	35 246.3	26 313.5	17 128.9	n.p.	n.p.	98 104.2
June	37 109.2	26 374.7	17 438.7	n.p.	n.p.	100 196.8
September	37 764.9	27 133.8	17 323.6	n.p.	n.p.	102 078.4
December	37 457.4	25 752.2	17 207.6	n.p.	n.p.	99 741.3
2001						
March	37 913.8	25 804.1	16 939.1	n.p.	n.p.	98 837.8
June	37 591.4	24 346.0	16 459.9	n.p.	n.p.	98 016.7
TREND ESTIMATES						
2000						
March	35 707.6	26 474.2	17 350.9	n.p.	n.p.	98 799.2
June	36 885.6	26 604.1	17 370.9	n.p.	n.p.	100 296.6
September	37 512.7	26 592.0	17 327.9	n.p.	n.p.	100 924.4
December	37 736.4	26 153.7	17 171.8	n.p.	n.p.	100 233.5
2001						
March	37 717.4	25 433.6	16 882.8	n.p.	n.p.	99 012.3
June	37 690.7	24 650.2	16 589.8	n.p.	n.p.	97 884.3

(a) For more information refer to paragraphs 8 and 9 of the Explanatory Notes.

NUMBER OF LIVESTOCK SLAUGHTERED(a): Original

Financial year	New South Wales '000	Victoria '000	Queensland '000	South Australia '000	Western Australia '000	Tasmania '000	Australia '000
BULLS, BULLOCKS AND STEERS							
1998-1999	780.9	852.1	1 808.0	123.1	197.9	94.8	3 871.1
1999-2000	755.4	710.0	1 958.2	169.5	181.5	109.0	3 892.7
2000-2001	712.1	618.7	2 191.3	179.7	187.0	90.2	3 983.4
COWS AND HEIFERS							
1998-1999	1 113.6	899.2	1 499.1	154.7	240.8	116.3	4 068.0
1999-2000	969.4	813.8	1 354.2	145.2	212.4	108.9	3 627.3
2000-2001	984.7	874.0	1 344.0	137.0	228.4	94.2	3 673.7
TOTAL CATTLE (excluding calves)							
1998-1999	1 894.5	1 751.3	3 307.0	277.8	438.7	211.1	7 939.1
1999-2000	1 724.8	1 523.8	3 312.5	314.7	393.9	217.9	7 520.0
2000-2001	1 696.8	1 492.8	3 535.2	316.7	415.4	184.4	7 657.1
CALVES							
1998-1999	242.6	714.4	112.3	19.9	6.4	61.0	1 157.4
1999-2000	211.0	678.5	141.7	17.6	10.5	62.1	1 122.1
2000-2001	226.0	608.9	135.0	11.6	5.6	49.7	1 037.5
SHEEP							
1998-1999	5 583.2	3 079.6	1 333.8	2 018.3	2 672.2	439.9	15 127.0
1999-2000	5 385.6	3 816.0	1 423.9	1 223.8	3 418.1	589.9	15 857.2
2000-2001	5 857.4	4 089.8	1 488.4	1 488.2	3 447.3	365.0	16 736.2
LAMBS							
1998-1999	3 913.2	6 699.4	756.5	2 153.5	2 076.4	480.1	16 079.2
1999-2000	4 059.0	7 144.5	917.6	2 634.7	2 345.0	456.3	17 557.1
2000-2001	4 203.2	7 965.7	1 021.7	2 875.1	2 464.0	416.1	18 945.8
PIGS							
1998-1999	1 347.1	1 572.8	1 132.4	465.8	568.7	81.2	5 176.3
1999-2000	1 408.2	1 443.7	1 111.2	469.2	513.9	70.1	5 024.7
2000-2001	1 739.5	1 065.6	1 074.9	525.7	542.6	57.6	5 012.8
CHICKENS							
1998-1999	140 794.0	95 543.3	65 989.7	n.p.	n.p.	n.p.	374 979.5
1999-2000	139 966.7	104 942.4	68 961.2	n.p.	n.p.	n.p.	391 773.2
2000-2001	150 464.5	102 813.2	67 955.3	n.p.	n.p.	n.p.	398 214.6

(a) For more information refer to paragraphs 4, 5 and 7 to 9 of the Explanatory Notes.

RED MEAT PRODUCED(a), Beef: All Series

	<i>New South Wales</i>	<i>Victoria</i>	<i>Queensland</i>	<i>South Australia</i>	<i>Western Australia</i>	<i>Tasmania</i>	<i>Australia</i>
<i>Quarter</i>	<i>tonnes</i>	<i>tonnes</i>	<i>tonnes</i>	<i>tonnes</i>	<i>tonnes</i>	<i>tonnes</i>	<i>tonnes</i>
ORIGINAL							
2000							
March	111 490	93 437	206 293	21 743	23 147	15 907	472 298
June	107 400	86 332	251 995	20 750	21 478	15 301	505 010
September	105 596	81 363	269 611	18 011	24 059	8 993	510 074
December	104 186	91 274	242 864	21 982	29 510	12 289	502 390
2001							
March	109 751	94 037	219 924	23 367	23 555	15 040	485 963
June	112 365	81 246	273 564	19 172	23 401	12 448	522 481
SEASONALLY ADJUSTED							
2000							
March	108 444	86 714	230 231	20 858	22 219	14 416	482 804
June	106 726	88 452	235 827	20 935	25 005	13 665	492 847
September	108 119	89 802	243 114	21 036	26 350	11 566	505 505
December	105 398	87 706	262 545	19 764	24 778	12 277	508 676
2001							
March	106 732	87 256	245 244	22 453	22 781	13 646	496 683
June	111 736	83 243	256 235	19 311	27 207	11 118	510 096
TREND ESTIMATES							
2000							
March	108 345	87 508	234 113	19 985	23 479	14 079	487 907
June	107 567	88 320	238 273	20 578	24 613	13 048	494 353
September	106 614	88 965	245 373	21 072	25 160	12 576	501 588
December	106 643	88 174	251 733	20 871	24 875	12 412	504 642
2001							
March	107 849	86 347	253 755	20 754	24 742	12 393	504 763
June	109 595	84 567	254 057	20 447	25 276	12 207	505 003

(a) For more information refer to paragraphs 4 to 6 of the Explanatory Notes.

RED MEAT PRODUCED(a), Veal: All Series

	<i>New South Wales</i>	<i>Victoria</i>	<i>Queensland</i>	<i>South Australia</i>	<i>Western Australia</i>	<i>Tasmania</i>	<i>Australia</i>
<i>Quarter</i>	<i>tonnes</i>	<i>tonnes</i>	<i>tonnes</i>	<i>tonnes</i>	<i>tonnes</i>	<i>tonnes</i>	<i>tonnes</i>
ORIGINAL							
2000							
March	3 461	739	1 815	98	239	33	6 397
June	3 514	2 899	1 783	121	191	89	8 610
September	3 447	7 441	1 537	112	116	764	13 429
December	3 240	1 403	1 593	58	98	141	6 545
2001							
March	3 728	536	1 290	70	82	26	5 743
June	3 799	2 462	1 263	67	86	65	7 755
SEASONALLY ADJUSTED							
2000							
March	3 492	3 558	1 747	115	253	382	9 176
June	3 125	3 455	1 715	103	216	288	8 725
September	3 474	3 145	1 546	95	107	260	8 630
December	3 620	2 379	1 719	74	91	213	8 600
2001							
March	3 771	2 582	1 240	81	87	293	8 239
June	3 366	2 951	1 214	57	97	213	7 857
TREND ESTIMATES							
2000							
March	3 312	3 346	1 696	113	238	323	8 939
June	3 341	3 344	1 716	102	199	300	8 842
September	3 447	3 035	1 654	92	135	266	8 694
December	3 586	2 686	1 529	82	96	246	8 481
2001							
March	3 624	2 620	1 370	72	86	245	8 239
June	3 540	2 727	1 214	64	91	240	7 959

(a) For more information refer to paragraphs 4 to 6 of the Explanatory Notes.

RED MEAT PRODUCED(a), Mutton: All Series

	<i>New South Wales</i>	<i>Victoria</i>	<i>Queensland</i>	<i>South Australia</i>	<i>Western Australia</i>	<i>Tasmania</i>	<i>Australia</i>
<i>Quarter</i>	<i>tonnes</i>	<i>tonnes</i>	<i>tonnes</i>	<i>tonnes</i>	<i>tonnes</i>	<i>tonnes</i>	<i>tonnes</i>
ORIGINAL							
2000							
March	31 057	21 994	6 917	8 810	21 354	4 002	94 135
June	27 948	17 699	6 043	5 792	14 569	3 013	75 062
September	30 823	18 336	7 427	8 072	17 620	1 146	83 423
December	31 247	21 172	6 801	9 826	24 125	1 610	94 781
2001							
March	34 102	23 127	7 073	9 885	17 601	2 873	94 659
June	30 663	19 331	7 085	8 321	10 107	1 606	77 113
SEASONALLY ADJUSTED							
2000							
March	28 930	18 902	6 515	7 096	18 990	2 992	83 242
June	30 107	21 100	6 849	7 078	16 279	2 854	84 748
September	33 316	22 397	7 149	11 114	20 619	2 095	96 210
December	29 138	17 944	6 682	8 102	21 510	1 524	84 971
2001							
March	31 779	19 892	6 663	7 956	15 590	2 142	83 674
June	33 087	23 006	8 044	10 166	11 316	1 525	87 141
TREND ESTIMATES							
2000							
March	29 517	19 624	6 694	7 181	17 721	3 024	83 763
June	30 352	20 638	6 773	8 242	18 778	2 626	87 439
September	31 096	20 581	6 838	8 909	19 954	2 191	89 504
December	31 210	20 029	6 860	8 953	19 203	1 876	87 980
2001							
March	31 553	20 304	7 082	8 869	16 402	1 746	85 788
June	32 196	21 393	7 472	8 931	12 739	1 714	84 145

(a) For more information refer to paragraphs 4 to 6 of the Explanatory Notes.

RED MEAT PRODUCED(a), Lamb: All Series

	<i>New South Wales</i>	<i>Victoria</i>	<i>Queensland</i>	<i>South Australia</i>	<i>Western Australia</i>	<i>Tasmania</i>	<i>Australia</i>
<i>Quarter</i>	<i>tonnes</i>	<i>tonnes</i>	<i>tonnes</i>	<i>tonnes</i>	<i>tonnes</i>	<i>tonnes</i>	<i>tonnes</i>
ORIGINAL							
2000							
March	18 222	34 616	4 628	14 475	10 256	2 685	84 882
June	21 958	36 314	4 640	18 757	11 551	2 215	95 435
September	23 075	38 694	5 335	15 785	9 179	2 201	94 268
December	19 332	41 226	4 543	15 689	11 944	1 992	94 727
2001							
March	20 013	38 980	4 674	14 968	12 703	1 971	93 309
June	20 488	36 640	5 053	15 451	11 387	1 850	90 868
SEASONALLY ADJUSTED							
2000							
March	19 318	34 911	4 602	14 501	11 628	2 338	87 452
June	22 064	38 386	4 835	17 307	11 815	2 053	97 037
September	21 883	39 047	4 879	17 554	8 987	2 480	93 966
December	19 153	38 570	4 887	15 434	10 696	2 255	90 977
2001							
March	21 266	39 248	4 652	14 985	14 374	1 714	96 121
June	20 568	38 803	5 263	14 251	11 675	1 716	92 414
TREND ESTIMATES							
2000							
March	20 219	35 706	4 521	14 714	11 342	2 222	88 900
June	21 061	37 496	4 801	16 519	10 746	2 291	92 984
September	21 185	38 826	4 866	17 065	10 533	2 297	94 565
December	20 723	39 051	4 839	16 058	11 246	2 145	93 806
2001							
March	20 446	38 953	4 900	14 955	12 312	1 905	93 370
June	20 581	38 937	5 028	14 296	12 984	1 680	93 625

(a) For more information refer to paragraphs 4 to 6 of the Explanatory Notes.

RED MEAT PRODUCED(a), Pig Meat: All Series

	<i>New South Wales</i>	<i>Victoria</i>	<i>Queensland</i>	<i>South Australia</i>	<i>Western Australia</i>	<i>Tasmania</i>	Australia
<i>Quarter</i>	<i>tonnes</i>	<i>tonnes</i>	<i>tonnes</i>	<i>tonnes</i>	<i>tonnes</i>	<i>tonnes</i>	<i>tonnes</i>
ORIGINAL							
2000							
March	25 257	26 122	20 331	8 245	7 056	1 027	88 130
June	28 855	25 673	22 083	8 884	9 322	1 110	95 985
September	31 771	20 999	19 929	8 227	8 771	927	90 708
December	30 568	19 667	21 469	8 143	8 786	837	89 541
2001							
March	31 924	18 734	16 892	9 785	9 074	837	87 319
June	36 107	19 554	19 926	10 524	10 150	982	97 315
SEASONALLY ADJUSTED							
2000							
March	27 123	28 403	21 129	8 467	7 160	1 102	93 717
June	27 689	24 255	21 092	8 340	8 722	1 019	90 782
September	31 285	20 198	19 630	7 919	8 543	913	89 086
December	30 243	19 759	22 003	8 850	9 439	867	90 996
2001							
March	34 255	20 574	17 557	10 029	9 204	899	92 825
June	34 670	18 459	19 025	9 872	9 497	900	92 009
TREND ESTIMATES							
2000							
March	26 569	26 815	20 640	8 205	8 089	1 053	91 421
June	28 375	24 255	20 970	8 251	8 192	997	91 095
September	30 052	21 452	20 724	8 345	8 741	935	90 427
December	31 672	20 028	20 035	8 903	9 164	889	90 828
2001							
March	33 320	19 538	19 238	9 586	9 337	885	91 916
June	34 663	19 162	18 587	10 105	9 513	896	92 716

(a) For more information refer to paragraphs 4 to 6 of the Explanatory Notes.

TOTAL RED MEAT PRODUCED(a): All Series

	<i>New South Wales</i>	<i>Victoria</i>	<i>Queensland</i>	<i>South Australia</i>	<i>Western Australia</i>	<i>Tasmania</i>	<i>Australia</i>
<i>Quarter</i>	<i>tonnes</i>	<i>tonnes</i>	<i>tonnes</i>	<i>tonnes</i>	<i>tonnes</i>	<i>tonnes</i>	<i>tonnes</i>
ORIGINAL							
2000							
March	189 488	176 908	239 984	53 370	62 052	23 654	745 843
June	189 674	168 917	286 545	54 303	57 112	21 728	780 103
September	194 712	166 832	303 838	50 206	59 744	14 031	791 903
December	188 574	174 743	277 271	55 698	74 462	16 869	787 985
2001							
March	199 518	175 413	249 852	58 074	63 014	20 746	766 994
June	203 421	159 234	306 891	53 535	55 132	16 951	795 532
SEASONALLY ADJUSTED							
2000							
March	187 307	172 488	264 224	51 037	60 250	21 230	756 391
June	189 711	175 648	270 318	53 763	62 037	19 879	774 139
September	198 077	174 589	276 318	57 718	64 606	17 314	793 397
December	187 552	166 358	297 836	52 224	66 514	17 136	784 220
2001							
March	197 803	169 552	275 356	55 504	62 036	18 694	777 542
June	203 427	166 462	289 781	53 657	59 792	15 472	789 517
TREND ESTIMATES							
2000							
March	187 962	172 999	267 664	50 198	60 869	20 701	760 930
June	190 696	174 053	272 533	53 692	62 528	19 262	774 713
September	192 394	172 859	279 455	55 483	64 523	18 265	784 778
December	193 834	169 968	284 996	54 867	64 584	17 568	785 737
2001							
March	196 792	167 762	286 345	54 236	62 879	17 174	784 076
June	200 575	166 786	286 358	53 843	60 603	16 737	783 448

(a) For more information refer to paragraphs 4 to 6 of the Explanatory Notes.

CHICKEN MEAT PRODUCED(a): All Series

	<i>New South Wales</i>	<i>Victoria</i>	<i>Queensland</i>	<i>South Australia</i>	<i>Western Australia</i>	<i>Australia</i>
<i>Quarter</i>	<i>tonnes</i>	<i>tonnes</i>	<i>tonnes</i>	<i>tonnes</i>	<i>tonnes</i>	<i>tonnes</i>
ORIGINAL						
2000						
March	57 613	42 363	23 208	n.p.	n.p.	150 476
June	56 862	42 511	23 581	n.p.	n.p.	149 492
September	57 150	42 735	23 628	n.p.	n.p.	152 454
December	61 743	46 915	24 768	n.p.	n.p.	160 945
2001						
March	60 659	41 874	22 984	n.p.	n.p.	150 124
June	62 900	42 698	22 354	n.p.	n.p.	154 777
SEASONALLY ADJUSTED						
2000						
March	57 184	42 505	23 348	n.p.	n.p.	150 005
June	57 424	43 119	23 803	n.p.	n.p.	151 068
September	57 474	43 729	24 119	n.p.	n.p.	154 868
December	61 393	45 096	23 917	n.p.	n.p.	157 681
2001						
March	60 507	42 016	23 126	n.p.	n.p.	149 965
June	63 526	43 337	22 550	n.p.	n.p.	156 428
TREND ESTIMATES						
2000						
March	56 336	42 517	23 886	n.p.	n.p.	149 473
June	57 641	43 371	23 856	n.p.	n.p.	152 504
September	58 555	43 910	23 932	n.p.	n.p.	154 376
December	59 980	43 816	23 751	n.p.	n.p.	154 660
2001						
March	61 576	43 351	23 226	n.p.	n.p.	154 322
June	62 998	42 855	22 662	n.p.	n.p.	154 030

(a) For more information refer to paragraphs 8 and 9 of the Explanatory Notes.

MEAT PRODUCED(a): Original

<i>Financial year</i>	<i>New South Wales</i> tonnes	<i>Victoria</i> tonnes	<i>Queensland</i> tonnes	<i>South Australia</i> tonnes	<i>Western Australia</i> tonnes	<i>Tasmania</i> tonnes	<i>Australia</i> tonnes
BEEF							
1998-1999	437 769	398 815	904 430	62 266	104 979	53 271	1 972 736
1999-2000	431 983	351 273	932 053	78 001	94 973	57 557	1 952 321
2000-2001	431 898	347 920	1 005 963	82 533	100 524	48 770	2 020 909
VEAL							
1998-1999	15 630	14 225	5 604	607	436	1 241	37 792
1999-2000	13 044	13 370	6 550	471	859	1 236	35 581
2000-2001	14 214	11 842	5 682	307	382	996	33 472
MUTTON							
1998-1999	117 416	61 646	26 042	48 029	54 451	8 724	316 307
1999-2000	118 947	76 719	27 704	28 969	69 077	11 796	333 212
2000-2001	126 835	81 965	28 386	36 103	69 453	7 235	349 977
LAMB							
1998-1999	77 138	128 380	14 134	44 172	39 021	9 222	312 068
1999-2000	80 016	140 215	17 456	56 667	44 136	8 833	347 323
2000-2001	82 908	155 540	19 605	61 893	45 212	8 014	373 173
PIG MEAT							
1998-1999	97 185	114 582	84 053	30 864	37 534	5 242	369 851
1999-2000	103 234	106 690	82 037	31 927	34 201	4 403	362 855
2000-2001	130 371	78 954	78 216	36 679	36 781	3 583	364 883
TOTAL RED MEAT							
1998-1999	745 138	717 648	1 034 263	185 938	236 421	77 700	3 008 753
1999-2000	747 224	688 266	1 065 801	196 036	243 247	83 825	3 031 291
2000-2001	786 225	676 222	1 137 852	217 514	252 352	68 598	3 142 414
CHICKEN MEAT							
1998-1999	223 222	153 601	88 086	n.p.	n.p.	n.p.	564 270
1999-2000	221 245	168 139	95 439	n.p.	n.p.	n.p.	592 703
2000-2001	242 452	174 222	93 734	n.p.	n.p.	n.p.	618 300

(a) For more information refer to paragraphs 4 to 9 of the Explanatory Notes.

EXPORTS OF FRESH, FROZEN AND PROCESSED MEAT, Australia(a): Original

Period	FRESH, CHILLED OR FROZEN MEAT.....								PROCESSED MEAT		
	<i>Beef bone -in</i>	<i>Beef bone -out</i>	<i>Veal bone -in</i>	<i>Veal bone -out</i>	<i>Mutton bone -in</i>	<i>Mutton bone -out</i>	<i>Lamb bone -in</i>	<i>Lamb bone -out</i>	<i>Pork</i>	<i>Bacon and ham</i>	<i>Canned meat</i>
	tonnes	tonnes	tonnes	tonnes	tonnes	tonnes	tonnes	tonnes	tonnes	tonnes	tonnes
1998-1999	61 019	836 576	1 614	6 143	114 745	51 398	71 576	9 334	16 510	168	13 056
1999-2000	45 508	818 667	1 555	7 395	120 946	55 499	86 551	11 064	39 227	88	13 867
2000-2001	41 918	937 481	2 063	6 399	127 667	63 617	103 349	12 247	43 835	280	14 875
2000											
March	11 729	178 375	304	1 282	33 436	13 918	20 706	2 618	8 776	13	3 241
June	11 673	215 621	294	1 353	31 252	12 665	25 528	3 159	9 957	11	4 076
September	12 143	229 812	605	2 679	24 961	16 069	26 687	2 958	10 231	76	3 679
December	13 964	249 817	502	1 962	34 515	19 391	29 031	3 230	10 043	67	3 537
2001											
March	8 498	207 857	370	561	35 287	14 852	23 211	2 906	10 539	67	3 576
June	7 313	249 995	586	1 197	32 904	13 306	24 420	3 154	13 021	70	4 083

(a) For more information refer to paragraphs 10 and 11 of the Explanatory Notes.

EXPORTS OF LIVE SHEEP AND CATTLE, Australia(a): Original

	<i>Number</i>	<i>Gross weight</i>	<i>Gross value</i>	<i>Unit value</i>
<i>Period</i>	'000	'000 tonnes	\$'000	\$
SHEEP				
1998-1999	4 958.7	254.9	181 671	36.64
1999-2000	4 858.6	243.3	180 345	37.12
2000-2001	5 938.3	285.5	258 297	43.50
2000				
March	1 345.1	66.7	49 924	37.12
June	1 077.2	53.3	40 223	37.34
September	1 241.4	60.7	48 598	39.15
December	1 657.2	77.9	67 080	40.48
2001				
March	1 726.6	82.0	77 523	44.90
June	1 313.0	65.0	65 096	49.58
CATTLE				
1998-1999	713.0	264.7	342 667	480.57
1999-2000	845.7	317.1	432 645	511.60
2000-2001	846.4	314.2	482 402	569.94
2000				
March	205.1	78.0	109 980	536.18
June	191.4	70.0	100 376	524.36
September	238.9	84.6	115 548	483.76
December	251.6	94.5	145 817	579.49
2001				
March	184.8	71.3	115 449	624.57
June	171.1	63.8	105 587	617.22

(a) For more information refer to paragraph 12 of the Explanatory Notes.

WHOLE MILK INTAKE, By Factories(a): All Series

	<i>New South Wales</i>	<i>Victoria</i>	<i>Queensland</i>	<i>South Australia</i>	<i>Western Australia</i>	<i>Tasmania</i>	<i>Australia</i>
<i>Quarter</i>	<i>ML</i>	<i>ML</i>	<i>ML</i>	<i>ML</i>	<i>ML</i>	<i>ML</i>	<i>ML</i>
ORIGINAL							
1999							
December	388	2 535	232	213	105	258	3 731
2000							
March	340	1 697	209	172	98	166	2 682
June	320	1 031	188	158	101	85	1 883
September	352	1 666	204	173	104	101	2 600
December	385	2 482	203	207	98	228	3 604
2001							
March	300	1 552	183	161	84	155	2 436
SEASONALLY ADJUSTED							
1999							
December	343	1 661	215	174	103	154	2 650
2000							
March	350	1 739	211	187	105	148	2 740
June	359	1 807	208	187	104	145	2 810
September	350	1 794	198	171	96	164	2 773
December	339	1 627	187	169	97	136	2 555
2001							
March	314	1 592	189	176	89	139	2 499
TREND ESTIMATES							
1999							
December	345	1 712	214	178	103	154	2 706
2000							
March	352	1 745	212	183	104	150	2 746
June	355	1 781	206	182	103	151	2 778
September	349	1 750	198	176	99	150	2 722
December	336	1 672	191	172	95	145	2 611
2001							
March	320	1 596	186	171	91	140	2 504

(a) For more information refer to paragraph 13 of the Explanatory Notes.

Source: Original series data from Australian Dairy Corporation.

MARKET MILK SALES, By Factories(a): All Series

Quarter	New South Wales	Victoria	Queensland	South Australia	Western Australia	Tasmania	Australia(b)
	ML	ML	ML	ML	ML	ML	ML
ORIGINAL							
1999							
December	143	112	96	48	47	12	458
2000							
March	139	107	94	46	47	12	444
June	140	110	95	44	48	12	448
September	152	115	99	51	49	13	479
December	150	112	99	49	48	12	469
2001							
March	144	110	96	49	47	12	458
SEASONALLY ADJUSTED							
1999							
December	143	112	97	47	47	12	457
2000							
March	142	110	94	46	48	12	452
June	139	108	95	45	48	12	446
September	149	114	97	50	49	13	472
December	150	112	100	48	48	12	469
2001							
March	147	113	97	50	47	13	467
TREND ESTIMATES							
1999							
December	142	111	96	46	47	12	454
2000							
March	141	110	95	46	48	12	452
June	143	110	95	47	48	12	456
September	146	111	97	48	48	12	463
December	149	113	98	49	48	13	469
2001							
March	150	113	99	50	47	13	471

(a) For more information refer to paragraph 13 of the Explanatory Notes.

(b) Australian total excludes Australian Capital Territory and interstate transfer of UHT milk.

Source: Original series data from Australian Dairy Corporation.

BROKERS AND DEALERS RECEIVALS OF TAXABLE WOOL(a): All Series

Quarter	New South Wales	Victoria	Queensland	South Australia	Western Australia	Tasmania	Australia	% of total received by brokers
	tonnes	tonnes	tonnes	tonnes	tonnes	tonnes	tonnes	%
ORIGINAL								
2000								
March	38 552	29 335	9 530	19 033	37 976	2 723	137 150	81.9
June	40 563	29 196	12 678	20 803	31 340	3 312	137 892	75.3
September	55 071	38 369	13 679	25 616	33 409	3 706	169 850	85.8
December	51 624	53 391	6 689	26 382	31 788	4 517	174 391	80.7
2001								
March	41 236	32 811	8 243	20 375	33 581	1 859	138 105	82.3
June	37 927	25 487	12 021	19 050	16 855	2 627	113 967	77.0
SEASONALLY ADJUSTED								
2000								
March	46 676	38 252	10 963	23 257	35 205	3 748	158 100	..
June	51 652	46 622	11 009	28 820	47 566	4 354	190 025	..
September	46 113	36 084	10 541	21 586	30 005	3 532	147 862	..
December	43 167	34 255	9 844	20 540	27 808	3 006	138 620	..
2001								
March	49 939	43 077	9 501	25 154	30 937	2 443	161 051	..
June	48 106	41 203	10 438	26 526	25 577	3 459	155 309	..
TREND ESTIMATES								
2000								
March	48 765	39 546	10 870	23 881	37 864	4 103	165 029	..
June	48 339	40 388	10 771	24 625	38 492	3 911	166 526	..
September	46 884	38 952	10 438	23 533	35 024	3 542	158 374	..
December	46 348	37 942	9 995	22 638	30 170	3 068	150 163	..
2001								
March	47 101	39 336	9 860	23 781	27 605	2 870	150 553	..
June	48 626	41 956	9 985	25 848	27 483	3 032	156 930	..

(a) For more information refer to paragraphs 14 and 15 of the Explanatory Notes.

LIVESTOCK PRODUCTS(a): Original

Financial year	New South Wales	Victoria	Queensland	South Australia	Western Australia	Tasmania	Australia
----------------	-----------------	----------	------------	-----------------	-------------------	----------	-----------

WHOLE MILK INTAKE BY FACTORIES (ML)(b)

1997-1998	1 242	5 866	822	580	386	543	9 438
1998-1999	1 286	6 414	827	643	403	603	10 175
1999-2000	1 395	6 870	848	714	412	609	10 847

MARKET MILK SALES BY FACTORIES (ML)(b)

1997-1998	591	442	379	182	190	49	1 833
1998-1999	578	442	382	185	191	48	1 827
1999-2000	566	440	383	185	190	48	1 811

BROKERS AND DEALERS RECEIVALS OF TAXABLE WOOL (Tonnes)

1998-1999	181 712	153 981	51 873	89 450	145 515	16 232	638 763
1999-2000	191 258	152 890	45 661	91 795	143 445	17 331	642 380
2000-2001	185 858	150 058	40 632	91 423	115 634	12 709	596 314

(a) For more information refer to paragraph 13 to 15 of the Explanatory Notes.

(b) Australian total excludes Australian Capital Territory and interstate transfer of UHT milk.

Source: Original series data from Australian Dairy Corporation.

WHAT IF...? REVISIONS TO TREND ESTIMATES

EFFECT OF NEW SEASONALLY ADJUSTED ESTIMATES ON TREND ESTIMATES

Each time new seasonally adjusted estimates become available, trend estimates are revised (see paragraphs 20 and 21 of the Explanatory Notes).

TREND REVISIONS

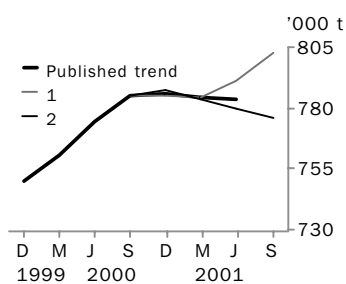
The graphs and tables which follow present the effect of two possible new seasonally adjusted estimates on the previous trend estimates:

1 The September Quarter 2001 seasonally adjusted estimate is higher than the June Quarter 2001 estimate by the percentage shown.

2 The September Quarter 2001 seasonally adjusted estimate is lower than the June Quarter 2001 estimate by the percentage shown.

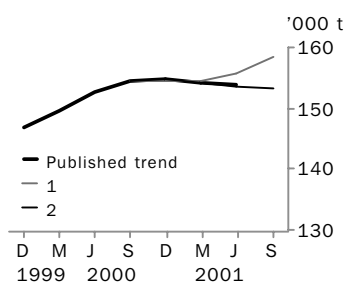
These percentages were chosen because they represent the average absolute quarterly percentage change for these series over the last ten years.

RED MEAT PRODUCTION



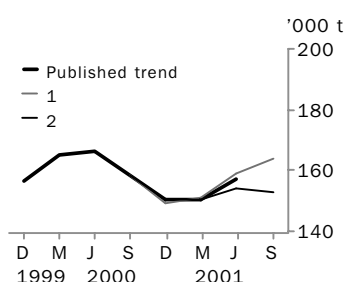
	TREND AS PUBLISHED		WHAT IF NEXT QUARTER'S SEASONALLY ADJUSTED ESTIMATE:			
	number	% change	1 <i>rises by 3% on Jun Qtr 2001</i>		2 <i>falls by 3% on Jun Qtr 2001</i>	
	number	% change	number	% change	number	% change
Jun Qtr 2000	774 713	1.8	774 714	1.8	774 714	1.8
Sep Qtr 2000	784 778	1.3	784 779	1.3	784 779	1.3
Dec Qtr 2000	785 737	0.1	784 744	0.0	787 249	0.3
Mar Qtr 2001	784 076	-0.2	784 607	0.0	783 643	-0.5
Jun Qtr 2001	783 448	-0.1	791 525	0.9	779 420	-0.5
Sep Qtr 2001	—	—	802 640	1.4	775 758	-0.5

CHICKEN MEAT PRODUCTION



	TREND AS PUBLISHED		WHAT IF NEXT QUARTER'S SEASONALLY ADJUSTED ESTIMATE:			
	number	% change	1 <i>rises by 4% on Jun Qtr 2001</i>		2 <i>falls by 4% on Jun Qtr 2001</i>	
	number	% change	number	% change	number	% change
Jun Qtr 2000	152 504	2.0	152 505	2.0	152 505	2.0
Sep Qtr 2000	154 376	1.2	154 375	1.2	154 375	1.2
Dec Qtr 2000	154 660	0.2	154 421	0.0	154 881	0.3
Mar Qtr 2001	154 322	-0.2	154 416	0.0	154 256	-0.4
Jun Qtr 2001	154 030	-0.2	155 789	0.9	153 580	-0.4
Sep Qtr 2001	—	—	158 379	1.7	153 137	-0.3

WOOL RECEIVALS



	TREND AS PUBLISHED		WHAT IF NEXT QUARTER'S SEASONALLY ADJUSTED ESTIMATE:			
	number	% change	1 <i>rises by 9% on Jun Qtr 2001</i>		2 <i>falls by 9% on Jun Qtr 2001</i>	
	number	% change	number	% change	number	% change
Jun Qtr 2000	166 526	0.9	166 526	0.9	166 526	0.9
Sep Qtr 2000	158 374	-4.9	158 374	-4.9	158 374	-4.9
Dec Qtr 2000	150 163	-5.2	149 287	-5.7	150 309	-5.1
Mar Qtr 2001	150 553	0.3	151 036	1.2	150 665	0.2
Jun Qtr 2001	156 930	4.2	158 749	5.1	153 823	2.1
Sep Qtr 2001	—	—	163 929	3.3	152 600	-0.8

WHAT IF...? REVISIONS TO TREND ESTIMATES

EFFECT OF NEW SEASONALLY ADJUSTED ESTIMATES ON TREND ESTIMATES

Readers should exercise care when interpreting trend estimates. The last three trend estimates, in particular, are likely to be revised when new seasonally adjusted estimates become available.

TREND REVISIONS

The graph and tables which follow present the effect of two possible scenarios on the previous trend estimates:

1 The June Quarter 2001 seasonally adjusted estimate is higher than the March Quarter 2001 estimate by:

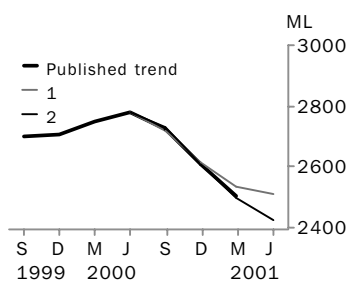
- +2% for whole milk intake by factories.

2 The June Quarter 2001 seasonally adjusted estimate is lower than the March Quarter 2001 estimate by:

- 2% for whole milk intake by factories.

These percentages were chosen because they represent the average absolute quarterly percentage change for these series over the last ten years.

WHOLE MILK INTAKE BY FACTORIES



	TREND AS PUBLISHED		WHAT IF NEXT QUARTER'S SEASONALLY ADJUSTED ESTIMATE:			
	number	% change	1 <i>rises by 2% on Mar Qtr 2001</i>		2 <i>falls by 2% on Mar Qtr 2001</i>	
	number	% change	number	% change	number	% change
Mar Qtr 2000	2 746	1.5	2 746	1.5	2 746	1.5
Jun Qtr 2000	2 778	1.2	2 778	1.2	2 778	1.2
Sep Qtr 2000	2 722	-2.0	2 721	-2.1	2 729	-1.8
Dec Qtr 2000	2 611	-4.1	2 612	-4.0	2 609	-4.4
Mar Qtr 2001	2 504	-4.1	2 537	-2.9	2 498	-4.3
Jun Qtr 2001	—	—	2 511	-1.0	2 426	-2.9

EXPLANATORY NOTES

INTRODUCTION

- 1** This publication contains information on livestock slaughterings, meat production, exports of live sheep and live cattle, exports of fresh, frozen and processed meat, and whole milk intake by factories, market milk sales by factories and receivals of taxable wool by wool brokers and dealers.
- 2** The figures shown in this publication have been revised where necessary and as a consequence may not agree with similar data shown in previous publications.
- 3** Where figures have been rounded, discrepancies may occur between sums of the component items and totals.
- 4** Unless indicated otherwise, Australian totals include data for all States and both Territories.

LIVESTOCK SLAUGHTERINGS AND MEAT PRODUCTION

- 5** The statistics on slaughterings and meat production are based on a monthly collection from abattoirs and other major slaughtering establishments and include estimates of animals slaughtered on farms and by country butchers and other small slaughtering establishments.
- 6** Red meat is shown in carcass weight and excludes offal.
- 7** Care should be taken when using this information as the figures only relate to slaughterings for human consumption and do not include animals condemned, slaughtered for petfood or those killed for boiling down.
- 8** Poultry slaughterings and meat produced statistics have been compiled from quarterly returns supplied by commercial poultry slaughtering establishments and comprise boilers, fryers and roasters. Many small producers are excluded from the collection; however, the statistics represent a high level of coverage. Tasmanian and Northern Territory data are excluded from the Australian total.
- 9** Chicken meat is shown in dressed weight of whole birds, pieces and giblets. Some slaughterings and meat production statistics for 'Ducks and Drakes' and 'Other Fowls and Turkeys' are available by contacting the ABS on Hobart 03 6222 5974 or by writing to GPO Box 66a, Hobart Tasmania 7001 (Attention: Agriculture Section).

EXPORTS OF FRESH, FROZEN AND PROCESSED MEAT

- 10** Table 20 shows exports of fresh, frozen and processed meat, excluding offal. Factors can be applied to beef, veal, mutton and lamb bone-out figures to derive bone-in carcass weight which, when added to bone-in figures, shows total exports in carcass weight. The factor for beef and veal is 1.5 and for mutton and lamb, 2.0 (Source: Department of Agriculture, Fisheries and Forestry–Australia).
- 11** Beef also includes buffalo meat. Bacon and ham shown is the cured carcass weight of smoked or cooked bacon and ham. It also includes the stated net weight of packs of canned bacon and ham. Canned meat is shown as the canned weight and excludes canned bacon and ham.

LIVE SHEEP AND CATTLE EXPORTS

- 12** Table 21 contains statistics of the number of live sheep and cattle exported, the gross weight, gross value and unit value. The unit value is obtained by dividing the gross value by the number of animals exported. Sheep and cattle exported for breeding are excluded.

MILK

- 13** Tables 2, 22, 23 and 25 contain statistics collected by the Australian Dairy Corporation (ADC). Whole milk intake by factories includes the whole milk equivalent of farm cream intake. Market milk sales includes white, flavoured, high and low fat milk and UHT milk.

EXPLANATORY NOTES

WOOL RECEIVALS

14 The statistics in tables 2, 24 and 25 show the amount of taxable wool received by brokers and purchased by dealers from wool producers. It excludes wool received by brokers on which tax has already been paid by other dealers (private buyers) or brokers.

15 The information shown is on the basis of the State in which wool has actually been received and does not necessarily reflect the production of wool in that State.

SEASONAL ADJUSTMENT

16 Seasonal adjustment is a means of removing the estimated effects of normal seasonal variation from the series so that the effects of other influences can be more clearly recognised.

17 In the seasonal adjustment of the livestock estimates, account has been taken of both normal seasonal factors and 'trading-day' effects, where significant, (arising from the varying length of each quarter and the varying numbers of Sundays, Mondays, Tuesdays etc. in the quarter). Adjustments are also made for the effects of change in the date of Easter holidays, again, where significant. Seasonal adjustment does not remove from the series the effect of irregular influences (e.g. abnormal weather, industrial disputes).

18 The State component series have been seasonally adjusted independently. Therefore, the adjusted components may not add to the Australian Group totals.

19 As happens with all seasonally adjusted series, the seasonal factors are reviewed annually to take account of each additional year's data.

TREND ESTIMATES

20 A trend estimate is obtained by reducing the irregular component from the seasonally adjusted series. In this publication trend estimates are generally derived by applying a seven term Henderson moving average to the seasonally adjusted series. The seven term Henderson, (like all Henderson averages) is symmetric, but as the end of a time series is approached, asymmetric forms of the average are applied. Unlike the weights of the standard seven term Henderson moving average, the weights employed here have been tailored to suit the particular characteristics of individual series. While the asymmetric weights enable the trend to be calculated for recent quarters, it does result in revisions to the estimates for the most recent three quarters as additional observations become available. Revisions of trend estimates will also occur with revisions to the original data and re-estimation of seasonal factors.

21 Sensitivity analysis indicates the potential magnitude and direction of revisions created to the last three estimates. It aims to show how a specified movement in the seasonally adjusted data in the next period will affect the trend path of the time series. By showing how sensitive the trend estimates are to the addition of new data, the analysis provides information which can be used in the assessment of the trend's stability.

22 For further information, see *Information Paper: A Guide to Interpreting Time Series — Monitoring 'Trends', an Overview* (Cat. no. 1348.0) or contact the Assistant Director, Time Series Analysis on Canberra 02 6252 6345.

RELATED PUBLICATIONS

23 Current publications produced by the ABS are listed in the *Catalogue of Publications and Products, Australia* (Cat. no. 1101.0). The ABS also issues, on Tuesdays and Fridays, a *Release Advice* (Cat. no. 1105.0) which lists publications to be released in the next few days. The Catalogue and Release Advice are available from any ABS office.

EXPLANATORY NOTES

GENERAL ACKNOWLEDGMENT

ABS publications draw extensively on information provided freely by individuals, businesses, governments and other organisations. Their continued cooperation is very much appreciated. Without it, the wide range of statistics published by the ABS would not be available. Information received by the ABS is treated in strict confidence as required by the *Census and Statistics Act 1905*.

SYMBOLS AND OTHER USAGES

billion	thousand million
ML	million litres
n.a.	not available
n.p.	not published
p	preliminary
t	tonnes
..	not applicable

FOR MORE INFORMATION...

- INTERNET* **www.abs.gov.au** the ABS web site is the best place to start for access to summary data from our latest publications, information about the ABS, advice about upcoming releases, our catalogue, and Australia Now—a statistical profile.
- LIBRARY* A range of ABS publications is available from public and tertiary libraries Australia-wide. Contact your nearest library to determine whether it has the ABS statistics you require, or visit our web site for a list of libraries.
- CPI INFOLINE* For current and historical Consumer Price Index data, call 1902 981 074 (call cost 77c per minute).
- DIAL-A-STATISTIC* For the latest figures for National Accounts, Balance of Payments, Labour Force, Average Weekly Earnings, Estimated Resident Population and the Consumer Price Index call 1900 986 400 (call cost 77c per minute).

INFORMATION SERVICE

Data which have been published and can be provided within five minutes are free of charge. Our information consultants can also help you to access the full range of ABS information—ABS user-pays services can be tailored to your needs, time frame and budget. Publications may be purchased. Specialists are on hand to help you with analytical or methodological advice.

- PHONE* **1300 135 070**
- EMAIL* **client.services@abs.gov.au**
- FAX* 1300 135 211
- POST* Client Services, ABS, GPO Box 796, Sydney 1041

WHY NOT SUBSCRIBE?

ABS subscription services provide regular, convenient and prompt deliveries of ABS publications and products as they are released. Email delivery of monthly and quarterly publications is available.

- PHONE* 1300 366 323
- EMAIL* subscriptions@abs.gov.au
- FAX* 03 9615 7848
- POST* Subscription Services, ABS, GPO Box 2796Y, Melbourne 3001



2721500006016
ISSN 0728-4047

RRP \$21.00